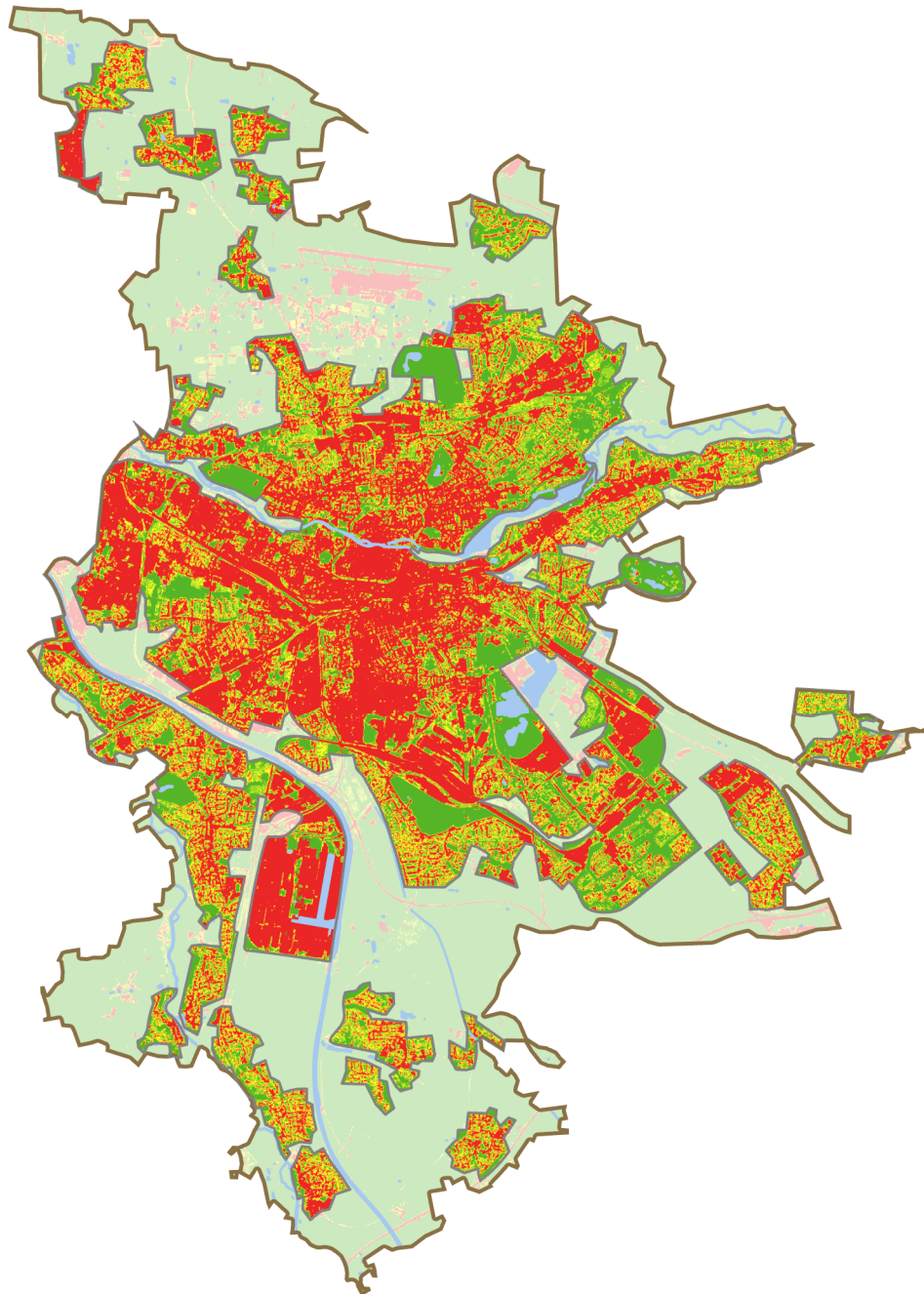


# Versiegelungskarte




## Nürnberg

Mittlerer Versiegelungsgrad  
in Siedlungsgebieten: 58,95%








Nürnberg-Brunn

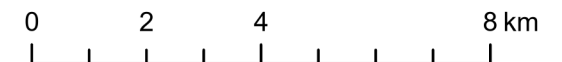


-  Siedlungsgrenzen
-  Gemeindegrenzen
-  Gewässer

Versiegelungsanteil (%)

-  0 - 20
-  21 - 40
-  41 - 60
-  61 - 80
-  81 - 100

(außerhalb der Siedlungsgebiete mit Transparenz)



Versiegelungsdaten:  
<https://land.copernicus.eu/pan-european/high-resolution-layers/imperviousness/status-maps/imperviousness-density-2018>

Siedlungs- und Gemeindegrenzen: DLM250 und VG250  
Gewässerdaten: Basis-DLM, © GeoBasis-DE / BKG 2023

